

PAGE CODE ERRORS REVEALED

How to set the Microsoft Internet Explorer browser to show-display the actual page code error, rather than getting the generic "PAGE CANNOT BE DISPLAYED" message.

STEP 1: Along the top left-hand corner of the Internet Explorer browser there is the browser menu. Select TOOLS to reveal a drop-down menu. Select INTERNET OPTIONS. (See illustration 1)

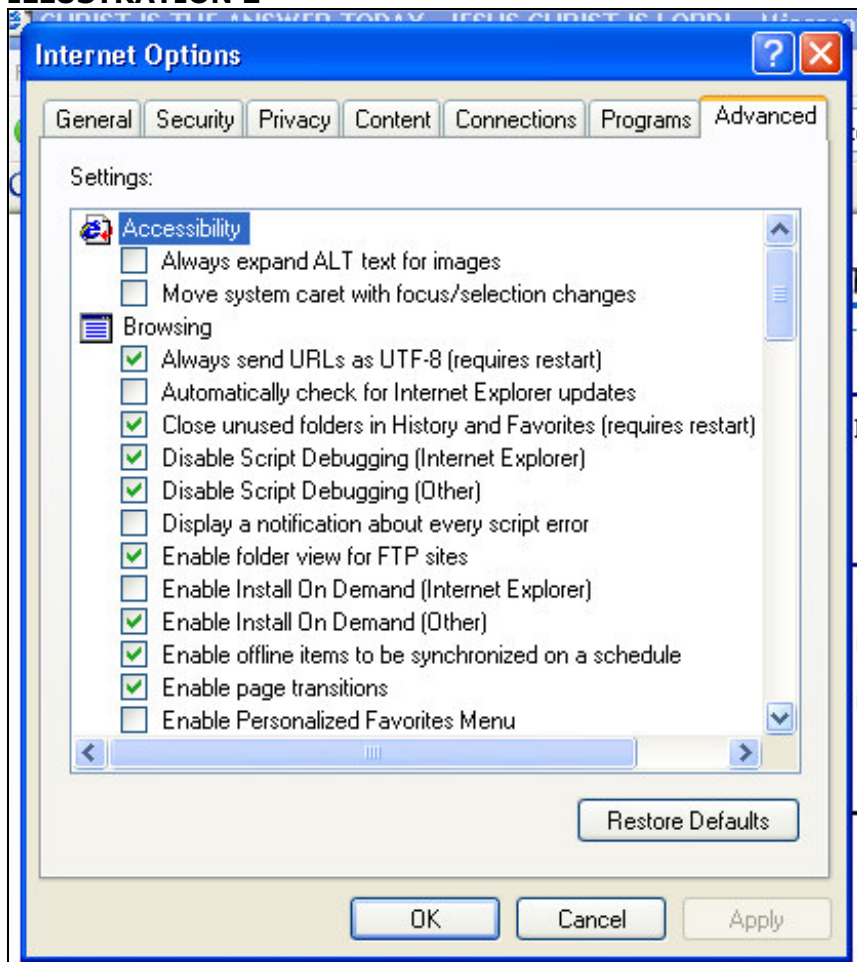
ILLUSTRATION 1



Upon selection of the TOOLS – INTERNET OPTIONS option, a pop-up window appears with seven (7) tabs: General | Security | Privacy | Content | Connections | Programs | Advanced

Select the ADVANCED TAB (See Illustration 2). Accessibility is highlighted in blue upon opening this window.

ILLUSTRATION 2



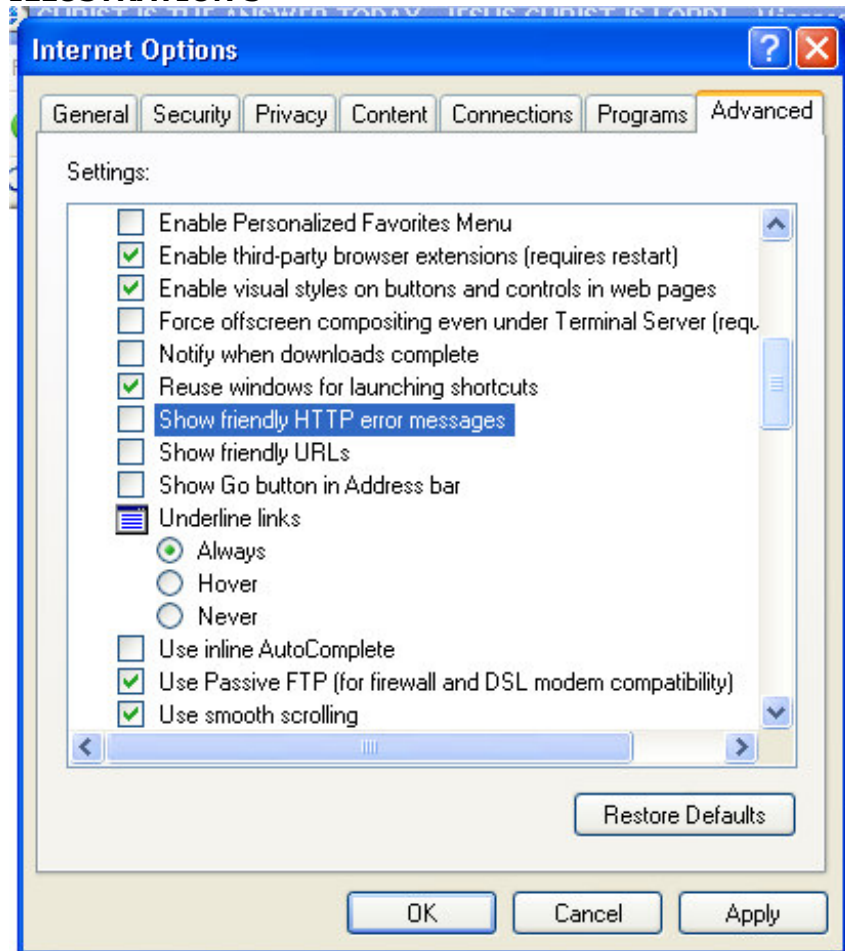
just below Accessibility is the BROWSING category.
Scroll-down under the BROWSING category until you see:

SHOW FRIENDLY HTTP ERROR MESSAGES

By default this option has a Green Arrow check mark in the box.
UNCHECK this option.

DO NOT HAVE A GREEN-ARROW checked in this box.
This will turn off the PAGE CANNOT BE DISPLAY message and show
You the actual reason the page failed. It will now display the code error.
SEE ILLUSTRATION 3

ILLUSTRATION 3



After un-checking the SHOW FRIENDLY HTTP ERROR MESSAGES
Select the APPLY option in the lower right-hand corner of this
window to save your changes.

Thank you for taking the time to do this. Please send all page code
Error message to: tdi@timeddesigns.com

Please enter in the SUBJECT LINE of your email to me this message...
YOUR FULL NAME: CITAORG Page Code Error Report

-OR CALL ME ASAP WHEN THE ERROR OCCURES AT 734-254-0021.
Thanks. Jim